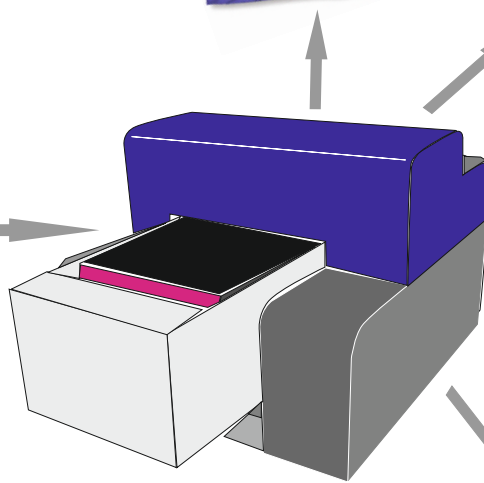
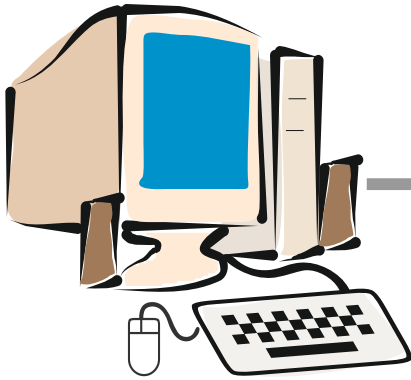


White Ink
RIP



Presenting

KothariPrint Pro™ V 1.5
(DTG Edition)

Software solution for Direct to Garment Printing.

Kothari Print Pro™ was the first software to automate the process of white underbase generation for black or colored garments with the introduction of its patented white underbase generation technology. Print Pro™ is a color managed and simple to use application. Print Pro™ offers all the features essential for professional grade reproduction of images on garments.

Kothari Print Pro™ offers extensive control over the strengths of white underbase, choke and highlight.

Kothari Print Pro™ uses channels to assign the choke, highlight, choke selection and transparent background. This also helps in visualizing what goes to the print. Grayscale representation of data allows Print Pro™ to offer more control than on and off levels.

See the demo of the software today to know how this tool makes the printing of garments more fun...

Recognizes transparent images.

When printing on colored media including black, it is important to decide what feature of image is background and what is foreground? Sometimes you may have colors that are a part of both background information as well as foreground information. Consider this, the white color in the images that we usually consider to be background is in-fact also the color of the eye or may be the color of the text in the image.

So if the selection of the foreground information to be printed is done by making the background as transparent at the time of design, the image can be targeted for any color media.

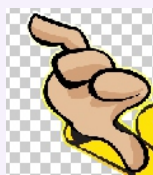


Image with transparent background as checkered pattern.

Print Pro™ recognizes the images with transparency including variable transparency. Variable transparency allows the design to be specified in a way that it can smoothly merge with the background

Automatic white underbase generation.

Printing images on colored background including black has never been so easy. Print Pro™ generate the white underbase automatically without any user intervention for accurate color matching. It doesn't matter how complex the design is!

All you need to do is to load a design, choose the right print mode, do placement and print.

Layout.

Platen Layout for printing multiple garments at the same time on a printer with large print bed.

Underbase Choking.

Print Pro™ allows you to create the choke layer in grayscale. Gray represents strength of the choke. Gray also allows to represent choke to the level below pixel. Further the choke can be applied to a selected portion of the image.

Different choke layers can be created with various thickness of choke and can be combined together during the application.

White highlight generation.

Print Pro™ has tools that allows you to generate the white highlight layer either interactively or on the fly during printing. Print Pro™ algorithms are smart enough to recognize white or near white colors only as white. It does not include the colors that are tinted.

Print mode creation.

Print Pro™ allows the user to create print modes by selecting the printing parameters. These print modes can be based upon complex choices of underbase and color layer resolutions, ink assignment to profile selections.

The user can then select the print modes from the drop down menu without going through the pain of defining the settings again for similar print media, thus saving efforts and boosting the productivity.

Transparency generator.

You can make a color transparent in the design by using the tool provided by Print Pro™. Multiple colors can be made transparent this way. The transparency thus generated is variable in nature depending upon the similarity with the color to be made transparent.

Features

Color management

- Print Pro™ is ICC aware, color managed application.
- Uses Embedded ICC profiles in the image files or assigns default profile to RGB and CMYK images (if no embedded profile is present).
- Integrated CMM.
- Uses CIE L*a*b* as profile connection space.

Device Profiling**

1. Printer
 - Support color profile generation for printing with white ink on colored background.
 - Device linearization.
 - Ink Limiting.
 - Custom GCR/UCR settings.
 - Innovative method for gray balancing.
2. Monitor calibration.
3. Spectrophotometer*** support is on plugin basis. Currently supports Xrite Spectrolino, Xrite Spectroscan, Barbieri LFP RT and Xrite Eye one Pro.

Halftoning

- Extended support for variable drop printing.
- Sophisticated dithering for highly smooth image output.

Image handling

- Reads and writes popular formats like BMP, PCX, GIF, PNG, JPG, TGA and multi-channel file formats like Tiff and Adobe Photoshop's PSD. Optional support for PS/PDF/AI/EPS is also available
- It also recognizes and support Transparency in PSD images.
- TWAIN compatible scanner/camera support.
- Handles large size images with ease by the help of 'Memory Management Module' that uses hard disk as scratch space.
- Versatile and easy-to-use Image adjustment and color correction filters with interactive preview.
- Image transformations like cropping, rotation, skewing, flipping etc with transparency support.
- Transparency generator tool to make the area covered by a color in the image transparent.

Layout Template

- On machines that have large printing bed, user can create templates with multiple platens laid out on the print bed. These templates than can be used to place different images on the platens.
- Each image placed in the layout template can be targeted for different media background.
- Each image can have its own target printer profile. That means not only media color but different types of media can also be targeted at the same type.
- You can place images with different color profile and colorspace (like

System Requirements

- Operating System: MS Windows 7 (32 bit) or later.
- Processor: Pentium i5 2.3 GHz or faster.
- RAM: 4 GB or more.
- Hard Disk: High speed SATA interface. Size depending upon the usage requirement (Print Pro™ uses hard disk as primary scratch space for storing image files). Recommended 100 GB or more free hard disk space.
- Monitor: SVGA or better with resolution 1024x768 or better, 24 bit color or better.
- One USB port for security key.

RIP management

Print Queue Manager

- Drive unlimited printers* from the single application.
- Simultaneous RIP and Print.
- RIP once Print many.
- Add all jobs for printing with one click.
- Job order changing, deleting, holding as per your priority.

Port Manager***

- Support File, USB, TCP/IP, Parallel and serial port.
- Printing through windows printer queue both on local machine or networked printer queue.

Printer Support

- Custom driver support for a large number of Digital Garment Printers.
- More than one channel of the printer can be assigned to the same color, e.g., 2 channels of the printer can be assigned to black color.

Printing

- Blow up your tiny images to any size and resolution.
- Bi-cubic interpolation for high quality output.
- Save ripped jobs on the disk as '.KPRN' file for later use.
- Print the selected area of the image or layout.
- Visual Ripping - Preview what goes on every page before it is sent to the printer.
- User defined print mode definition to make printing workflow easier

Garment specific

- Automatic white underbase generator.
- Choke feature for white underbase.
- White highlight generator.

* User defined number - Limited only by the practical throughput of the computer system and speed of the printer/s connected. Also depends upon the configuration of the software purchased.

**Depends upon the configuration of the software purchased. Please contact your distributor for this feature.

***Ports/Spectrophotometers are supported on the basis of a plugin architecture. It means whenever there is a new port/spectrophotometer supported, all you need to do is to add this plugin to your existing software.

Actual feature in your software can vary based on the configuration of the software purchased. Please consult your supplier for more details.

For further details contact

Marketing Cell (Print Pro™)
Kothari Info-Tech Limited
802, Empire State Building,
Near Udhna Darwaja, Ring Road,
Surat, Gujarat. INDIA 395 002

Tel +91 (261) 2365945, 2365946, 2365947.
Fax +91 (261) 2365948
Email - mktg@kothariinfotech.com
URL - www.kothariinfotech.com

Authorized dealer stamp

Kothari Info-Tech (P) Limited

© 2001-2016 Kothari Info-Tech (P) Limited. All rights reserved.

This brochure is for informational purposes only. Kothari Info-Tech (P) Ltd. makes no warranties express or implied in this document. Print Pro™ is trademark of Kothari Info-Tech (P) Ltd. All other product and company names mentioned herein may be the trademarks of their respective owners.