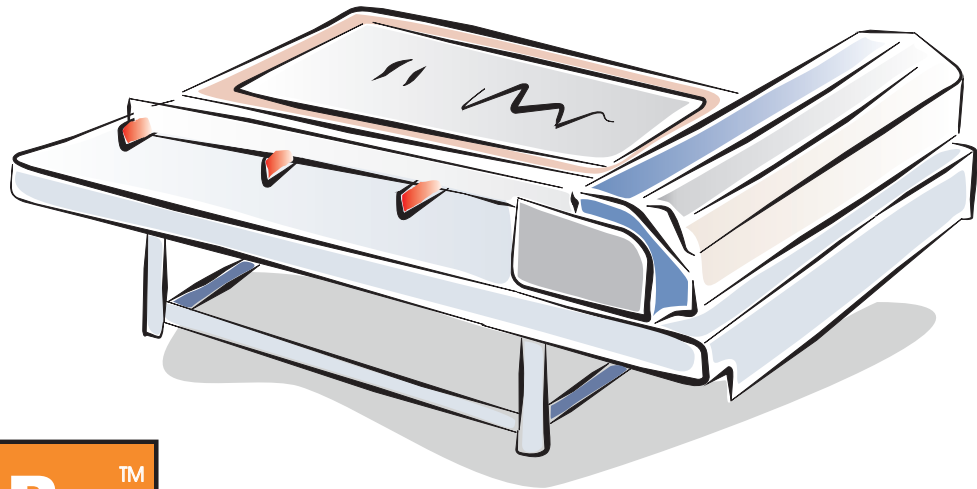
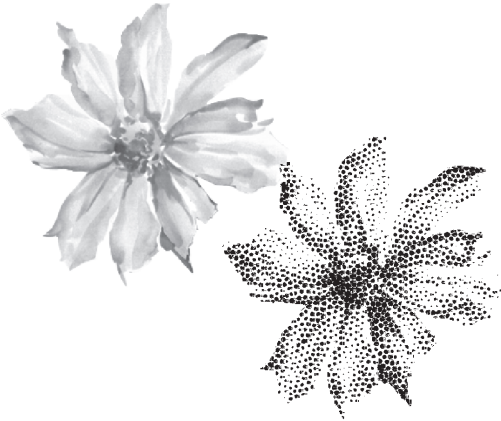


A Visual Rip for Screen Engraving



Presenting

KothariPrint Pro™ V 1.5
(Engraving edition)

Solution for Screen engraving, Film plotting and proofing.

This edition of **Kothari Print Pro™** from Kothari Info-Tech Ltd. is a ripping software, designed to bring professional engraving solutions to your desktop.

You can drive your inkjet engraver, laser engraver or film plotter using Print Pro™.

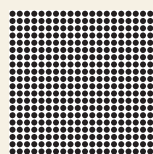
Kothari Print Pro™ offers an array of tools to address the issues involved in textile prepress with ease and greater flexibility. It offers high quality screening along with step 'n' repeat and irregular dubbing at repeat joint.

You can also color proof your color separations on any Windows® compatible printer, without producing any screen.

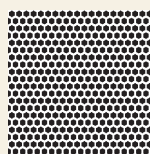
Read on to learn more about this tool...

Engraving

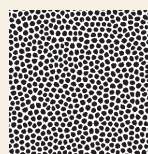
Print Pro™ understands the precise requirements of a textile engraver. It offers high quality seamless screening with step 'n' repeat and irregular dubbing at joints. Print Pro™ offers about 34 traditional dots, error diffusion and grayscale file based halftoning function. Print Pro™ also offers stochastic screens for moire free reproduction. For rotary screen there is special honeycomb dot.



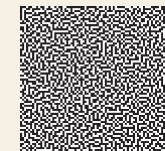
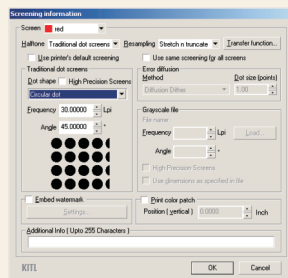
Traditional dot



Honeycomb dot



Stochastic dot

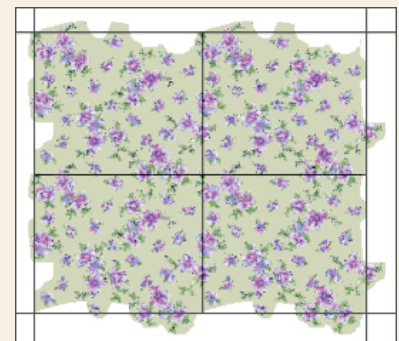


Error diffusion dot

Step and Repeat



Irregular Dubbing



Proofing

Simulation of the actual print by putting raster in different screens and printing the combined result. This helps in detecting the errors early in the pre-press stages, and cuts down the costs involved in traditional proofing/sampling process.



Visual Ripping

Preview what goes on every page before it is sent to the printer.

Layout / Nesting

Support for laying out multiple small jobs on a single page - A page saving feature. Useful for film production.

Features

Color management

- Print Pro™ is ICC aware, color managed application.
- Uses embedded ICC profiles in the image files or assigns default profile to RGB and CMYK images (if no embedded profile is present).
- Integrated CMM.
- Uses CIE L*a*b* as profile connection space.
- Supports D50 and D65 illuminant for profile connection space.

Device Profiling

- Printer linearization.
- Monitor calibration.
- Spectrophotometer* support is on plugin basis. Currently supports Gretag Macbeth Spectrolino and Eye one Pro.

Halftoning

General

- Halftoning in different shape, size and angle.
- High precision screens with accurate angles and rulings.
- 34 different built in halftone shapes.
- Grayscale file based halftone support at different angle and ruling.
- Stochastic screening for moire free printing. Very useful for multicolor conventional textile printing.

Film/Screen Production

- Produce films on your large format printer / imagesetter or produce data for engraving.
- Seamless halftoning on repeat joints.
- Emulsion down and film inversion support.
- Transfer curve based gain compensation for each film.
- Irregular dubbing / figure joints.
- Ink coverage for each film to allow cost estimation in conventional printing workflows.

Image handling

- Reads and writes popular formats like BMP, PCX, GIF, PNG, JPG, TGA and multi-channel file formats like Tiff and Adobe Photoshop's PSD.
- Handles large size images with ease by the help of its 'Memory Management Module' that uses hard disk as scratch space.
- Image transformations like cropping, rotation, skewing, flipping etc with transparency support.
- If nesting Screens/Films in a Layout, each screen can have different halftoning options.

System Requirements

- Operating System: MS Windows 98 or later, Microsoft Windows 2000 or later.
- Processor: Pentium III 450 MHZ or faster.
- RAM: 128 MB (256 recommended).
- Hard Disk: Size depending upon the usage requirement (Print Pro™ uses hard disk as primary scratch space for storing image files). Recommended 20 GB or more free hard disk space.
- Monitor: SVGA or better with resolution 800x600 or better, 256 or more color support needed.
- One USB port for security key.

RIP management

Print Queue Manager

- Simultaneous RIP and Print.
- RIP once Print many.
- Add all jobs for printing with one click.
- Job order changing, deleting, holding as per your priority.

Port Manager*

- Supports File, USB, TCP/IP, Parallel and serial port.
- Printing through windows printer queue both on local machine or networked printer queue.

Printer Support

- Custom driver support for Engraver.
- Printing to file. File format supported are Tif, TGA, RTL, EPS®.
- Printing through windows driver / windows printer.

Printing

- Color prints only on Windows® compatible printer.
- Bi-cubic interpolation for high quality output.
- Save ripped jobs on the disk as '.KPRN' file for later use.
- Auto Tiling - Automatically breaks up large jobs into multiple pages with user specified overlapping on page boundaries to make the task of stitching these pages simpler.
- Visual Ripping - Preview what goes on every page before it is sent to the printer.
- Ink consumption estimation for every print.

Textile specific

- On the fly Step 'n' Repeat.
- Produce films/data for engraving.
- Special honeycomb screens for rotary screens.
- Draw figure joints on the engraving data.
- Do proofing of the production data by putting rasters into the separations (on the fly by Print Pro™) on your Windows® compatible printer.

Available for screen/engraving data only.

*Ports/Spectrophotometers are supported on the basis of a plugin architecture. It means whenever there is a new port/spectrophotometer supported, all you need to do is to add this plugin to your existing software.

For further details contact

Marketing Cell (Print Pro™)
Kothari Info-Tech Limited
802, Empire State Building,
Near Udhna Darwaja, Ring Road,
Surat, Gujarat. INDIA 395 002

Tel +91 (261) 2365945, 2365946, 2365947.
Fax +91 (261) 2365948
Email - mktg@kothariinfotech.com
URL - www.kothariinfotech.com

Authorized dealer stamp

Kothari Info-Tech Limited

© 2001-2005 Kothari Info-Tech Limited. All rights reserved.

This brochure is for informational purposes only. Kothari Info-Tech Ltd. makes no warranties express or implied in this document. Print Pro™ is trademark of Kothari Info-Tech Ltd. Microsoft®, Windows® and windows NT® are registered trademarks of Microsoft Corporation. All other product and company names mentioned herein may be the trademarks of their respective owners.