

Features

Color management

- Print Pro™ is ICC aware, color managed application.
- Uses Embedded ICC profiles in the image files or assigns default profile to RGB and CMYK images (if no embedded profile is present).
- Integrated CMM.
- Uses CIE L*a*b* as profile connection space.
- Color book based on CIE L*a*b*, CIE L*c*h*, RGB, CMYK, HSL and printing primaries combinations.

Device Profiling

1. Printer
 - Support 4-12 color profile generation with patch reduction technology.
 - Support generation of CMYK+ colors profile. Extended colors may include orange, green, blue, violet, light and fluorescent colors.
 - Device linearization.
 - Ink Limiting and Custom GCR/UCR settings.
 - Innovative method for gray balancing.
 - Extensive control over dark-light color ink splitting.
2. Monitor calibration.
3. Scanner calibration.
4. Spectrophotometer*** support is on plugin basis. Currently supports XRite Spectrolino, Spectroscan, i1 Pro and Barbeiri LFP RT.

Halftoning

General

- Extended support for variable drop printing.
- Sophisticated dithering for highly smooth image output.
- Halftoning in different shape, size and angle.
- High precision screens with accurate angles and rulings.
- 34 different built in halftone shapes.
- Grayscale file based halftone support at different angle and ruling.
- Stochastic screening for moire free printing. Very useful for multicolor conventional textile printing.

Film/Screen Production

- Produce films on your large format printer / imagesetter or produce data for engraving.
- Seamless halftoning on repeat joints.
- Emulsion down and Film inversion support.
- Transfer curve based gain compensation for each film.
- Irregular dubbing / figure joints.

Image handling

- Reads and writes popular formats like BMP, PCX, GIF, PNG, JPG, TGA, multi-channel file formats like Tiff, Adobe Photoshop's PSD/PSB and PS/PDF/AI/EPS.
- It also recognizes and support Transparency in PSD/PSB/PNG images.
- TWAIN compatible scanner/camera support.
- Handles large size images with ease by the help of 'Memory Management Module' that uses hard disk as scratch space.
- Versatile and easy-to-use Image adjustment and color correction filters with interactive preview.
- Image transformations like cropping, rotation, skewing, flipping etc with transparency support.
- Powerful Layout feature not only allows you to nest your multiple jobs but also allows you to compose your designs rapidly from individual components. Combined with transparency support in images, Layout feature truly becomes very powerful composer.
- You can place images with different color profile and colorspace (like CMYK, RGB, Lab, Multi-Channel etc) in Layout simultaneously.
- If nesting Screens/Films in a Layout, each screen can have different halftoning options.

For further details contact

Marketing Cell (Print Pro™)
Kothari Info-Tech (P) Limited
802, Empire State Building,
Near Udhna Darwaja, Ring Road,

Authorized dealer stamp

Surat, Gujarat. INDIA 395 002

Tel +91 (261) 2365945, 2365946, 2365947.
Fax +91 (261) 2365948
Email - mktg@kothariinfotech.com
URL - www.kothariinfotech.com

RIP management

Print Queue Manager

- Drive unlimited printers* from the single application.
- Simultaneous RIP and Print.
- RIP once Print many.
- Add all jobs for printing with one click.
- Job order changing, deleting, holding as per your priority.

Port Manager***

- Support File, Firewire**, USB, TCP/IP, Parallel and serial port.
- Printing through windows printer queue both on local machine or networked printer queue.

Printer Support

- Custom driver support for a large number of Digital Textile Printers.
- Printing to file. File format supported are Tif, TGA, RTL, EPS#.
- Printing through windows driver / windows printer.

Printing

- Supports up-to 12 color channel printers.
- Blow up your tiny images to any size and resolution.
- Print images up to almost any length.
- Bi-cubic interpolation for high quality output.
- Save ripped jobs on the disk as '.KPRN' file for later use.
- Print the selected area of the image or layout.
- Auto Tiling - Automatically breaks up large jobs into multiple pages with user specified overlapping on page boundaries to make the task of stitching these pages simpler.
- Visual Ripping - Preview what goes on every page before it is sent to the printer.
- Ink consumption estimation for every print.

Textile specific

- On the fly Step 'n' Repeat.
- Produce films/data for engraving.
- Special honeycomb screens for rotary screens.
- Draw figure joints on the engraving data.
- Do proofing of the production data by putting rasters into the separations (on the fly by Print Pro™) on your digital textile printer.
- Produce any number of colorways.

Available for screen/engraving data only.
* User defined number - Limited only by the practical throughput of the computer system and speed of the printer/s connected. Also depends upon the configuration of the software purchased.

** At present Firewire support available only for Mimaki Tx2-1600 model.

***Ports/Spectrophotometers are supported on the basis of a plugin architecture. It means whenever there is a new port/spectrophotometer supported, all you need to do is to add this plugin to your existing software.

IMPORTANT: Features may vary based on the edition of the software purchased. Please contact your distributor for more information.

System Requirements

- Operating System: MS Windows XP or later.

- Processor: Intel multi-core i3 or better.

- RAM: 2GB (4GB or more recommended).

- Hard Disk: Fast SATA/ SSD. Size depending upon the usage requirement. Recommended 50GB or more free hard disk space.

- Monitor: Screen resolution 1280x720 or better, with 24 bit color or better.

- One dedicated USB port for security key.

Kothari Info-Tech (P) Limited.

Specifications subject to change without notice.



Device Profiling
Engraving
Proofing
Colorways
Printing

All with one software...

Presenting



Advanced color management
and
RIP software for
DIGITAL TEXTILE PRINTING

For accurate colors on your fabric

KITL

Kothari Print Pro™ has been created for the most demanding workflows in today's textile printing environment. It has been created keeping in mind the specific needs of textile designers and printers.

For workflows starting from color separated files, it takes care of engraving, colorways/ matchings to simulation of production proofs on a digital textile printer.

For workflows involving small lot production, starting with RGB/CMYK/LAB image composites, it takes care of true to life reproduction of the design on the fabric.

Its powerful memory management tools take care of handling any amount of design data in a smaller amount of RAM, yet giving a consistent and reliable performance. Being a multi-threaded application the software rips the images at blazing speeds, providing extremely fast throughput.

Its innovative features like Layout lets you assemble large designs rather quickly. In few minutes flat!

As an advanced color reproduction tool, it includes a sophisticated ICC aware CMM and tools for profiling scanner, monitor and printers for consistent color reproduction.

Innovative implementation of Color Book to handle spot colors.

Read on to learn how this powerful tool takes care of the requirements of your business, from concept to market...

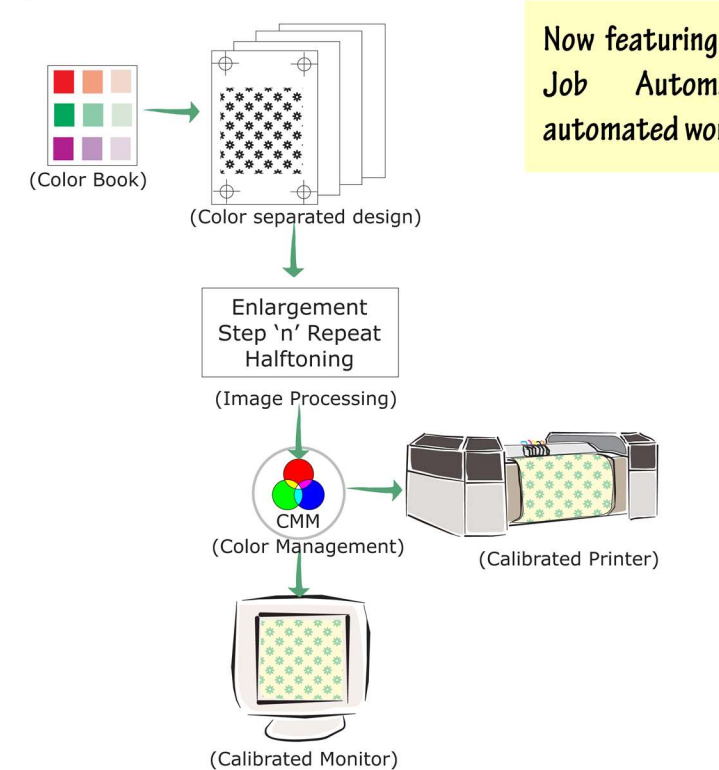


Digital Textile printing offers two major possibilities to textile printers, namely proofing the designs targeted for conventional printing without engraving a single screen and a business opportunity that never was there for the conventional printing setup - Digital production, where every meter can be a unique print with no color limitation! Kothari Print Pro™ has been designed to help you take advantage of these possibilities.

Proofing

Print Pro™ significantly simplifies the task of digital proofing a design on the inkjet printer.

You can proof your color separated design targeted for conventional printing, without actually engraving a single screen. Print Pro™ color proofs your job by doing step 'n' repeat, screening and then combining the output into a color composite before outputting on the printer. All done on the fly. All you need to do is to assign screening parameters to each screen. Following illustration explains the workflow. As shown you can also take advantage of the color book for assigning color values to each screen. Color Book can also act as a visual bridge between inkjet and shop floor color reproduction capabilities.



Step 'n' Repeat

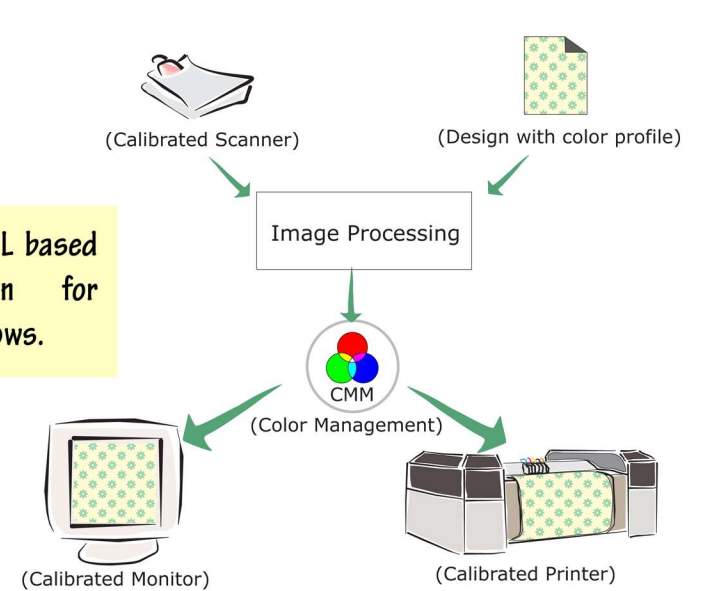


Image handling and color adjustment

Textile designs are generally high resolution images that need a lot of computer memory. No amount of RAM is enough for handling them. Even if you can buy a lot of RAM, the maximum RAM your OS allows to be addressed is still limited. In a single session you may surpass this limit. What to do? Fortunately Print Pro™ answers this problem with the help of its advanced memory manager. It transparently works to use hard disk as scratch space to keep images and available RAM only as cache to perform operations. **Print Pro™ also has a lot of useful color adjustment filters.**

Digital production

For designs targeted for digital production, you simply need to load or scan the design and then give the print command. Its that simple. Print Pro™'s Color management module takes care of the intricacies involved to reproduce the design on the fabric, with the reproduction quality like a photo finish.



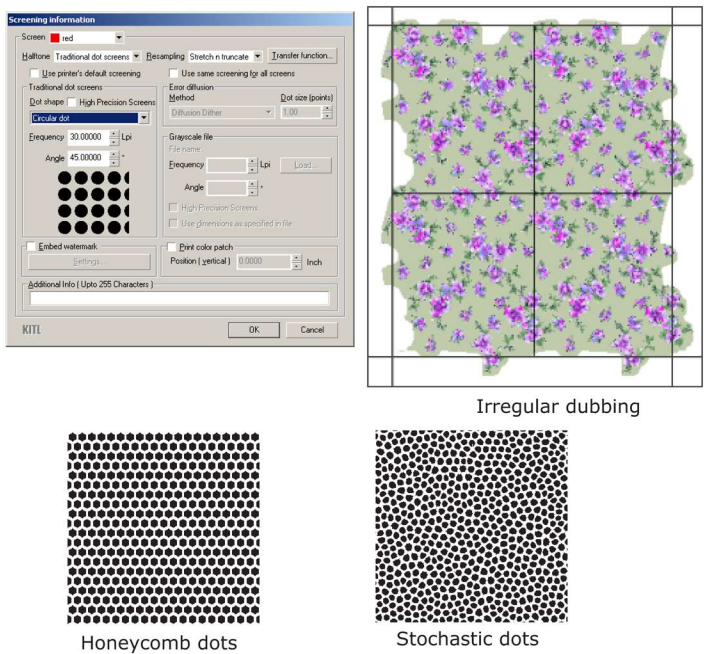
Colorways

Generating colorways is a very simple matter with Print Pro™. For your color separated design, create unlimited colorways from a single master file without generating additional image data. Look at the illustration below.



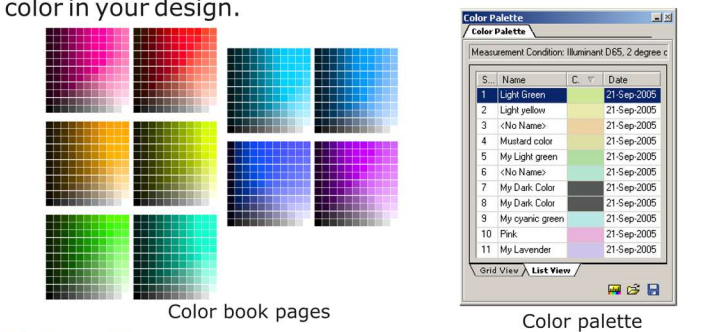
Engraving

Print Pro™ understands the precise requirements of a textile engraver. It offers high quality seamless screening with step 'n' repeat and irregular dubbing at joints. Print Pro™ offers about 34 traditional dots, error diffusion and grayscale file based halftoning function. Print Pro™ also offers stochastic screens for moire free reproduction. For rotary screen there is special honeycomb dot.



Managing Spot colors

While color management's focus is to maintain the color appearance, sometimes it becomes necessary to produce the exact color. Print Pro™ offers you tools like color book and color palette to precisely achieve that. You can measure your target with the help of a spectrophotometer or acquire it as color coordinates and then use these tools to achieve the color in your design.



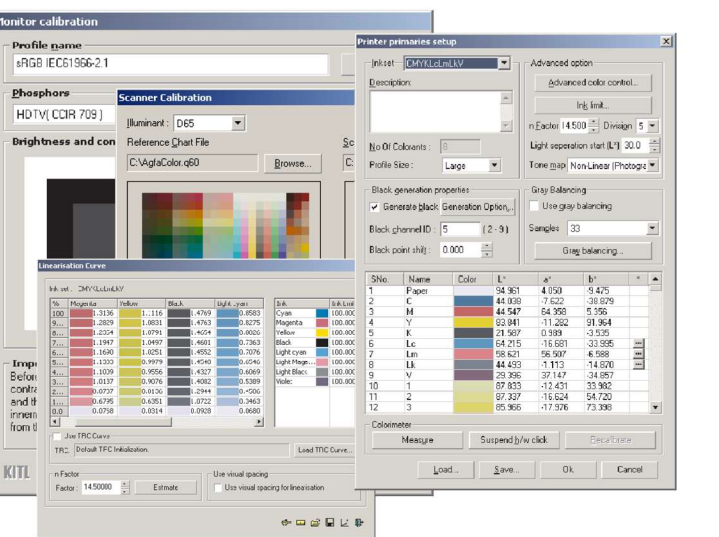
Print Queue

Once you have your design ready for printing on the printer, simply hand it over to the Print queue. Print queue takes care of the rest. Print queue is an user interface that holds all the jobs targeted for different printers. You can then continue doing operations with other images. Print queue can also RIP multiple jobs simultaneously in the background. Printing starts immediately as you give the command, because of simultaneous RIP and Print support.

You can print your designs at virtually unlimited resolution and size.

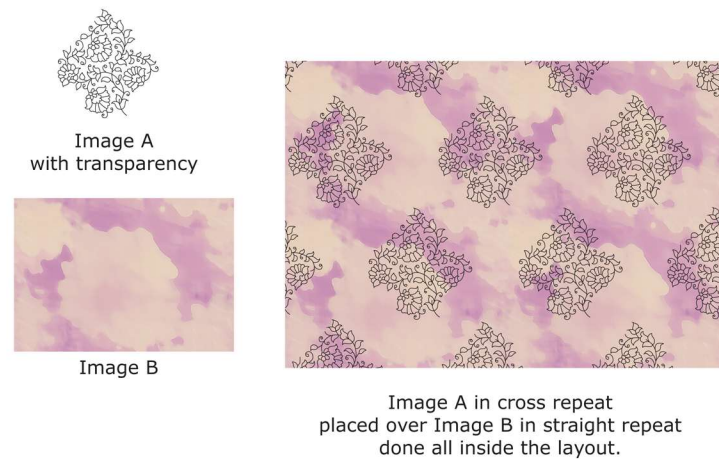
Device Calibration

Essential to any color managed workflow is the calibrated state of the devices involved for color reproduction and acquisition. Print Pro™ lets you calibrate your printer, scanner and monitor and save the profiled state in ICC format. Color management module takes advantage of these profiles during the operation. Print Pro™ can profile printers having upto 12 color channels. It offers exhaustive control over light ink separation, black generation (UCR, GCR) and other practical aspects of profile generation. It also offers an innovative tool for gray balancing the profiles.



Layout

The name might suggest that layout is a nesting feature, however a close look at it will reveal that Layout is a much more powerful tool true to its name. It can help you layout large designs in just a few minutes. It also supports transparent images, which means you can overlay images on top of each other like layers. You can place images inside the layout with absolute precision. All this when combined with the ability to do step 'n' repeat makes layout very powerful. Wait there is more. Individual images in the same layout can be of different color mode like RGB, CMYK, LAB or Multi-Channel.



To know more about us or to have more information on the product visit us at www.kothariinfotech.com